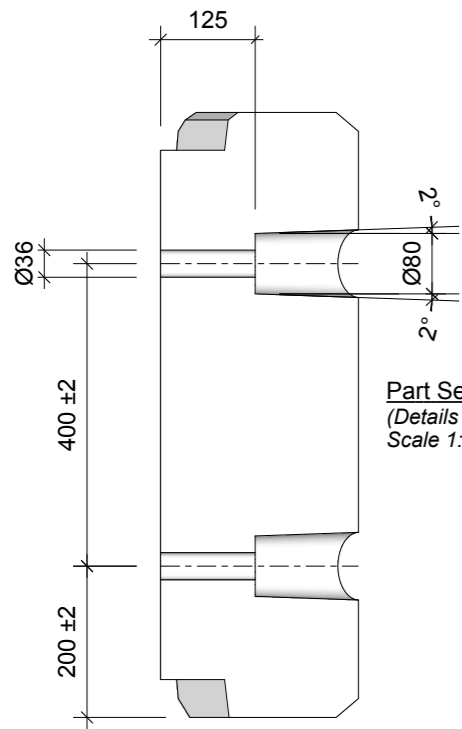
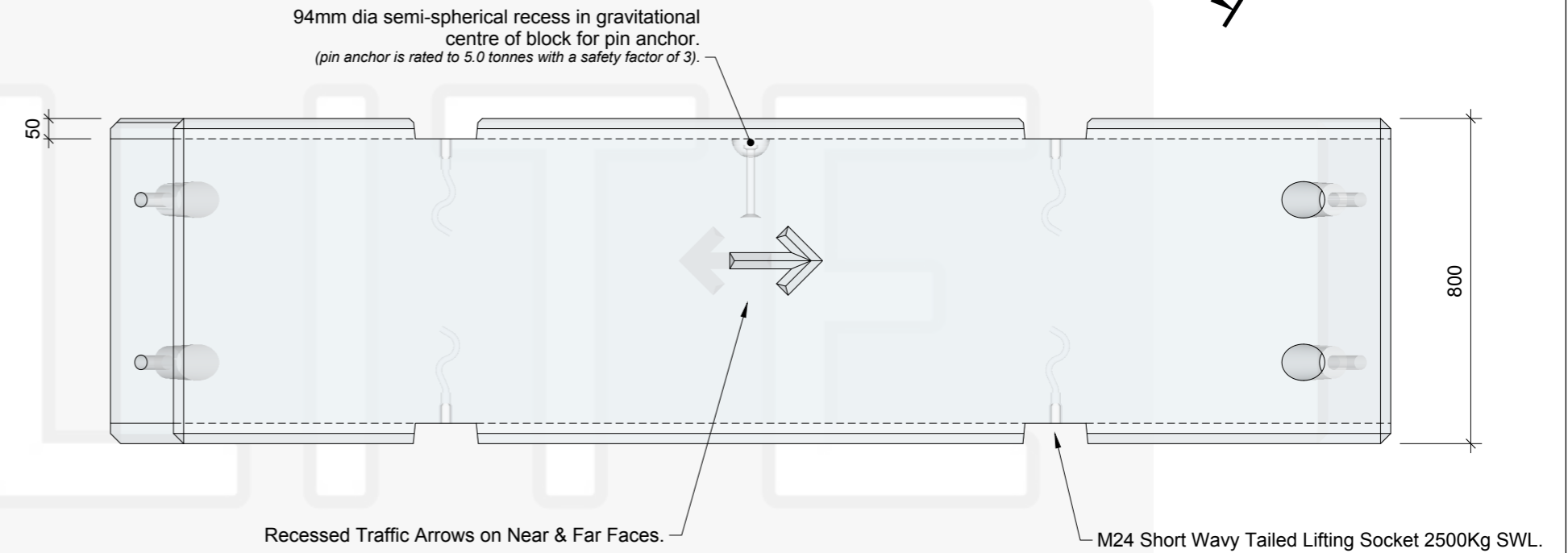
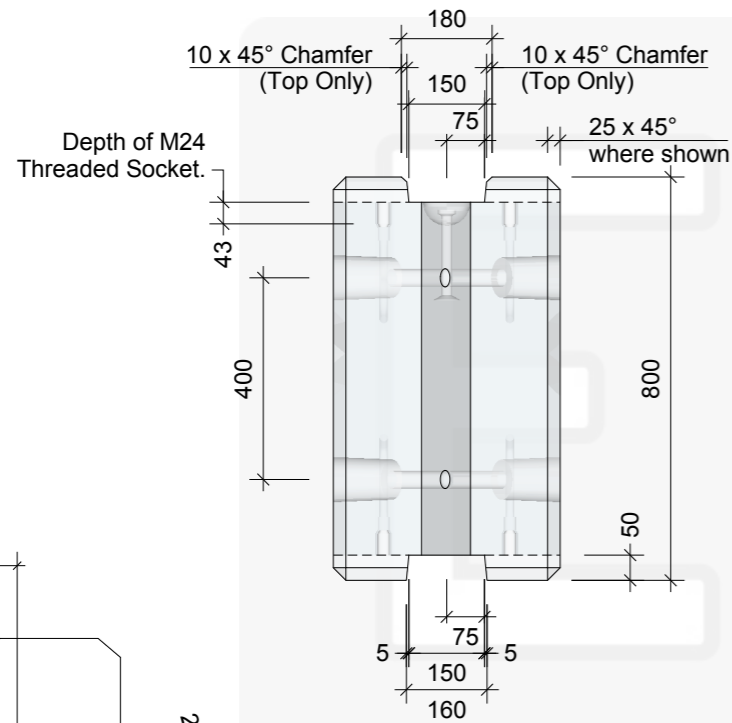
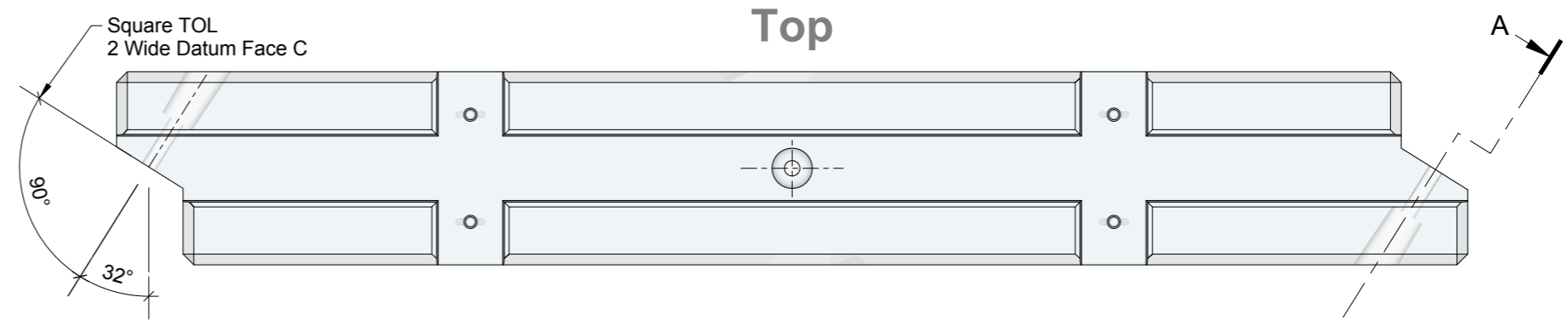


**Notes**

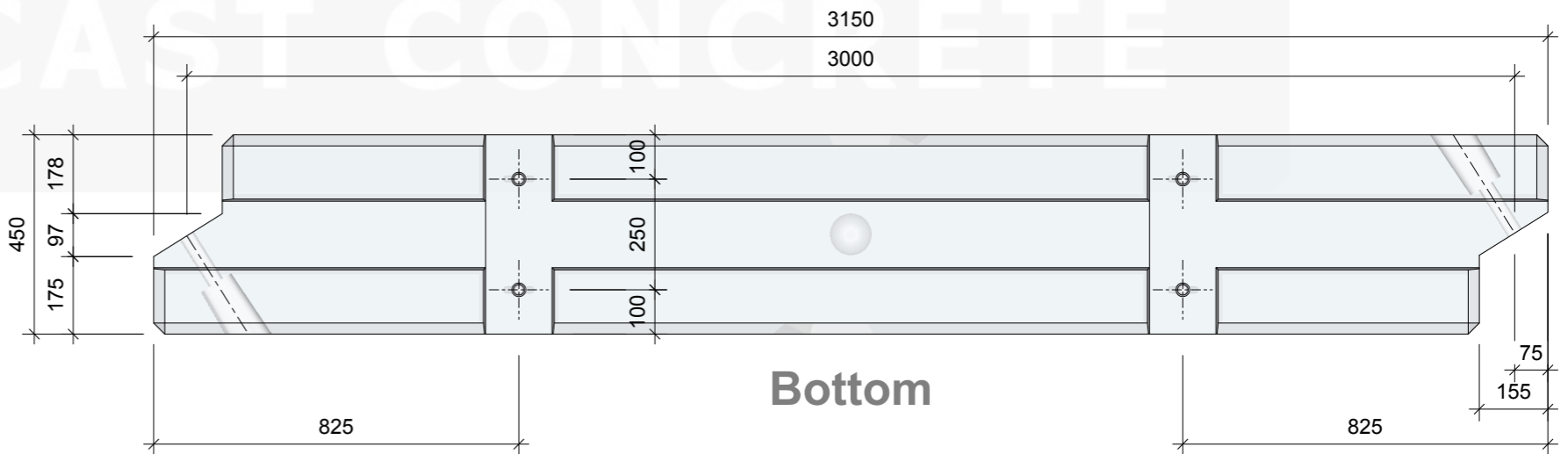
- Dimensions in millimetres.
- Tolerance to be  $\pm 0.5\%$  unless otherwise stated.
- Concrete mix C50.
- For reinforcement details see drawings :  
EPC-TVCB-002  
EPC-TVCB-003  
EPC-TVCB-004
- The overlap of the scarf joint must always be in the direction of traffic.

Weight of Barrier : 2,500kg Approx.

All Elite Precast Temporary Concrete Vertical Barriers (TVCB) are manufactured using high strength (50N/mm<sup>2</sup>) concrete



Part Section on Arrow A - A  
(Details Identical Both Ends).  
Scale 1:10



REV	DATE	REASON FOR ISSUE	DRN	APP	REV	DATE	REASON FOR ISSUE	DRN	APP	TITLE	DRN	CHKD	RMD	DATE	SIZE	SCALE	DRG	REV						
					B	19.08.19	10 x 45° chamfer added to top recess only.	CTC	RMD	Temporary Vertical Concrete Barrier (TVCB) Standard Unit Elite Product Code : V28														
					A	08.02.18	Drawing revised & updated.	CTC	RMD		ELITE PRECAST CONCRETE LTD HALESFIELD 9, TELFORD SHROPSHIRE TF7 4QW													
					O	27.09.16	For Information.	CTC	RMD		ELITE PRECAST CONCRETE													
											DRN	CTC	CHKD	RMD	DATE	27-09-16	SIZE	A3	SCALE	1:15	DRG	EPC-TVCB-001	REV	B